

# MONTHLY MEMBERSHIP PROGRESS REPORT

LOCATION AUSTRALIA

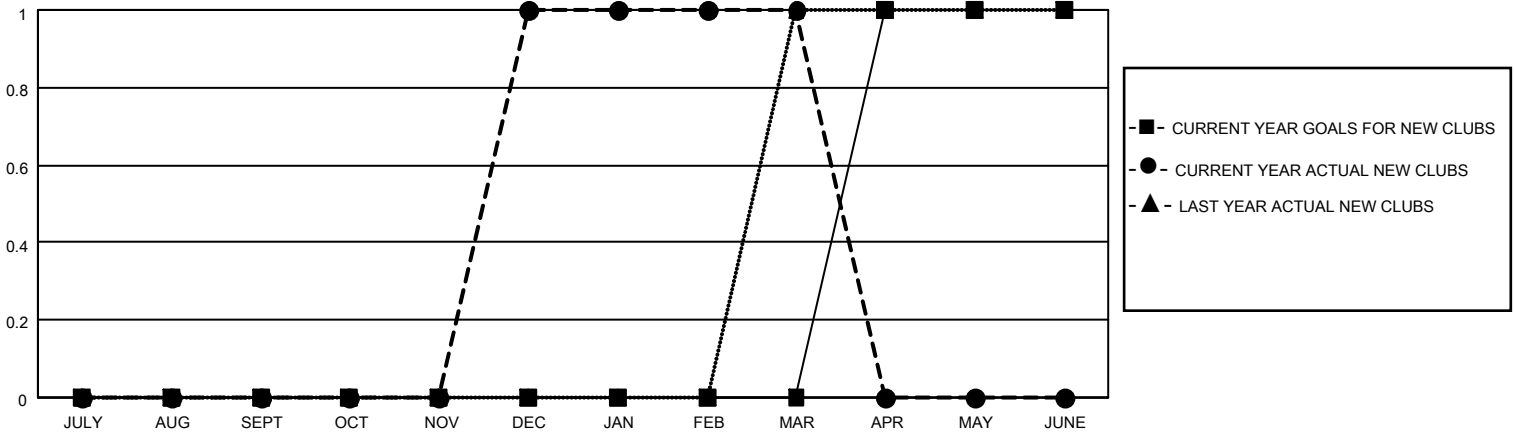
District 201N5

Results as of: 3/31/2021

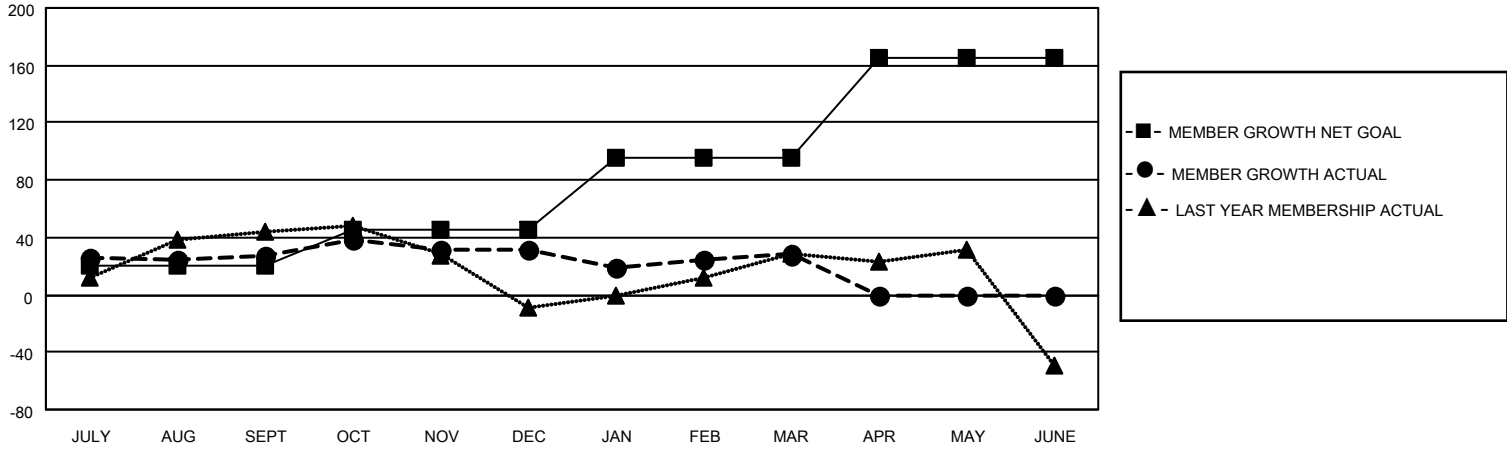
Clubs			
RESULTS FOR 2020-2021			
QUARTER	NEW CLUB GOAL	NEW CLUBS	DROPPED CLUBS
JULY/AUG/SEPT	0	0	2
OCT/NOV/DEC	0	1	0
JAN/FEB/MAR	0	0	0
APR/MAY/JUNE	1	0	0

Members			
RESULTS FOR 2020-2021			
QUARTER	MEMBER GROWTH NET GOAL	MEMBER GROWTH ACTUAL	DROPPED MEMBERS ACTUAL (including transfers)
JULY/AUG/SEPT	20	74	39
OCT/NOV/DEC	25	68	60
JAN/FEB/MAR	50	37	34
APR/MAY/JUNE	70	0	0

**GOALS AND ACTUAL NEW CLUBS CUMULATIVE**



**GOALS AND ACTUAL MEMBERS CUMULATIVE**



**DROPPED CLUBS: 2**

**39 CLUBS OF 73 ADDED 1 OR MORE NEW MEMBERS**

**GENDER DISTRIBUTION**

MALE 958 (62.37%)  
FEMALE 578 (37.63%)

**DROPPED MEMBERS**

DECEASED	2
CLUB CANCELLED	0
OTHER	131
<b>TOTAL</b>	<b>133</b>

[CLICK HERE FOR CUMULATIVE MEMBERSHIP DATA](#)

TOTAL FAMILY UNIT MEMBERS	229
FAMILY MEMBERS PAYING HALF DUES	123